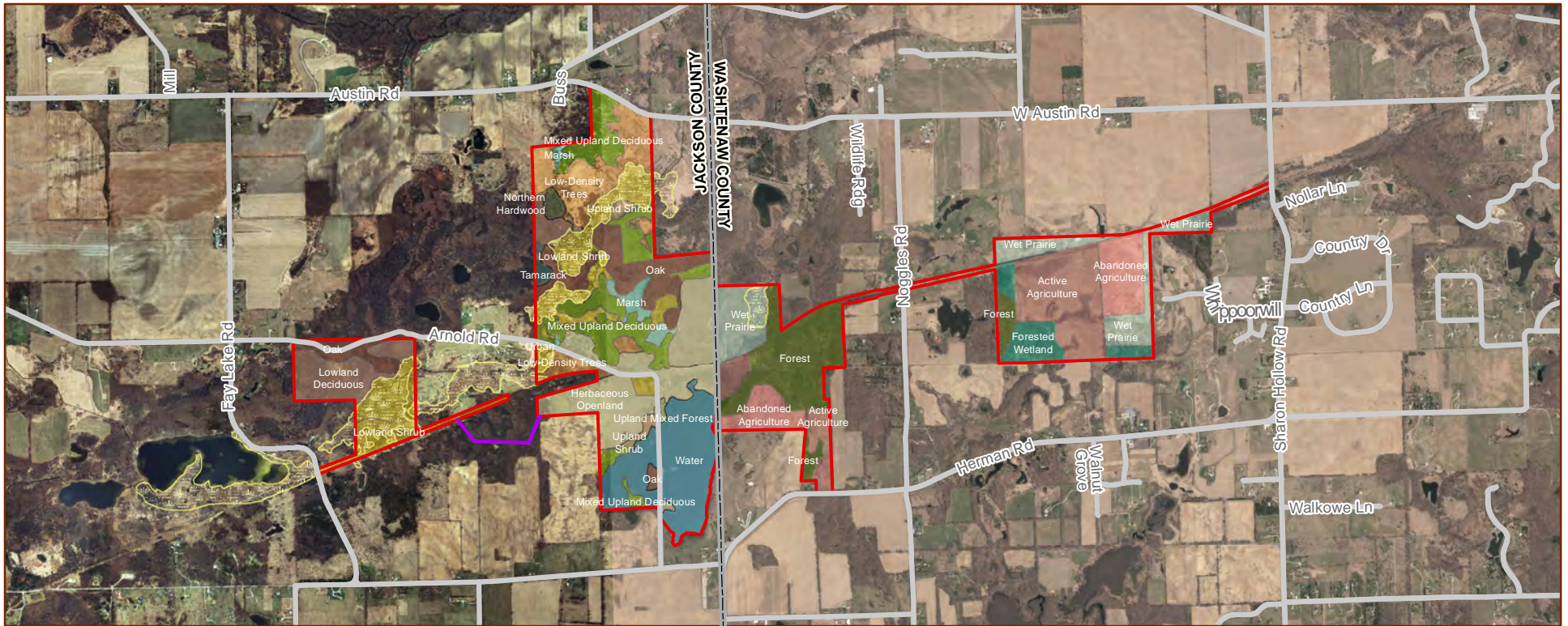
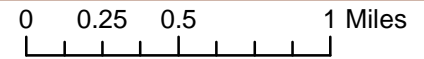




STATE OF MICHIGAN - DEPARTMENT OF NATURAL RESOURCES
Watkins Lake State Park & County Preserve
 Land Cover Type (2017)



Legend



MNFI Stand Covertype

- Water
- Marsh
- Lowland Shrub
- Lowland Deciduous
- Tamarack
- Herbaceous Openland
- Upland Shrub

- Low-Density Trees
- Mixed Upland Deciduous
- Upland Mixed Forest
- Northern Hardwood
- Oak
- Urban
- Prairie Fen

Washtenaw County Land Cover

- Open Water
- Bog
- Fen
- Marsh
- Shrub Wetland
- Wet Prairie
- Forested Wetland

- Prairie
- Forest
- Savanna
- Active Agriculture
- Abandoned Agriculture
- Recreation
- Primary
- Unknown

Watkins Lake Boundary

- Park Boundary
- Trail Easement Connection (approx.)

Other Map Features

- Road

Map created by WCPARC
 Created on: 6/27/2017
 Sources: Washtenaw County GIS, MNFI,
 MiGDL, Jackson County GIS